

# LANTHANUM III

## Phosphate Hydra

Lanthanide phosphate are promising candidates as carriers for alpha and beta emitters in RIT, TAT and imaging applications. Lanthanide phosphate ( $\text{LaPO}_4$ ) is the first element and prototype of the lanthanide series. Lanthanum phosphate is one among the lanthanide family of rare earth phosphate characterized by versatile properties such as hydrophobicity, metallophobicity, low thermal conductivity and machinability.

**$\text{LaPO}_4 \cdot x\text{H}_2\text{O}$**

**CAS**

**14913-14-5**

**NS6130-12-000350**

### Quick Facts

Product	:	Lanthanum III Phosphate Hydra
Stock No	:	NS6130-12-000350
CAS	:	14913-14-5
Color	:	White
Form	:	Powder

### TECHNICAL Specification

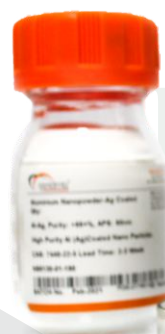
APS	:	40-50 $\mu\text{m}$
Purity	:	99.9%
Molecular Weight	:	251.89 g/mol
Solubility	:	Insoluble in water

### APPLICATIONS

- ✓ Coloring agent of glass and ceramics
- ✓ Used as a sintering additive
- ✓ Used as dopants for high-efficiency solid state lasers.
- ✓ In electric capacitors
- ✓ As catalysts and catalyst supports

**APS**  
40-50 $\mu\text{m}$

**PURITY**  
99.9%



### Packing Sizes:

25Gms, 50Gms, 100Gms, 500Gms & Bulk Orders

**INTELLIGENT MATERIALS PVT LTD**  
Derabassi  
Punjab (140507)  
INDIA

+91 9779 550077, 9779238252



202ICE4589C



18ZAZG01274G



202ICE4588M

ISO 9001:2015  
CERTIFIED COMPANY

**NANOSHEL UK LIMITED**  
Chapel House,  
Chapel St Cheshire,  
CW12 4AB United Kingdom

+44 (0) 74 105 488, +44 203 137 5187

**NANOSHEL LLC**  
3422 Old Capitol Suit  
1305 Wilmington DE - 19808  
United States

+1 646 470 4911



Follow us:

f @ in | www.nanoshel.com | sales@nanoshel.com